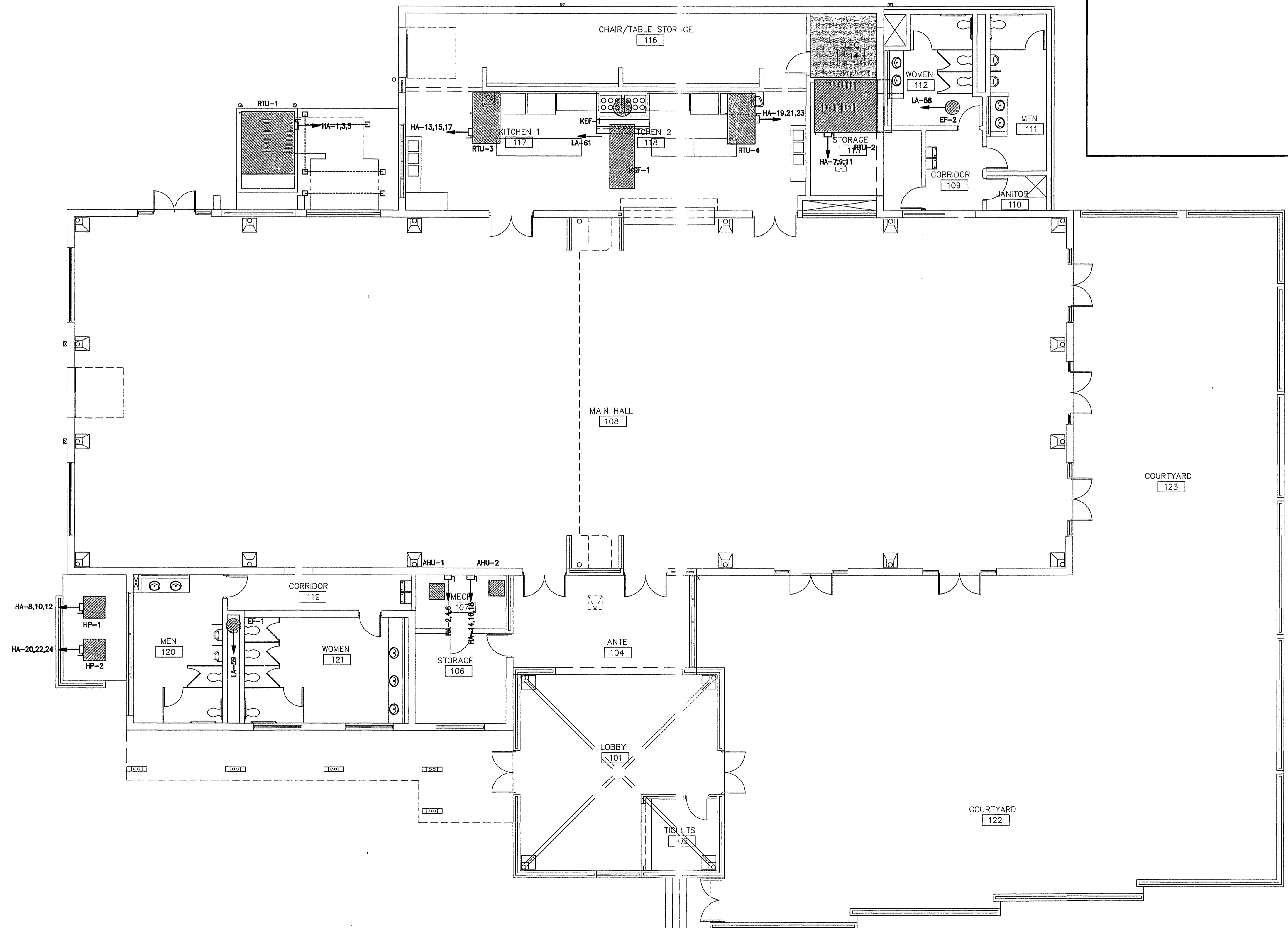


A B C D E F G

KEYED NOTES
 THESE NOTES APPLY TO THIS SHEET ONLY

① KEYED NOTES

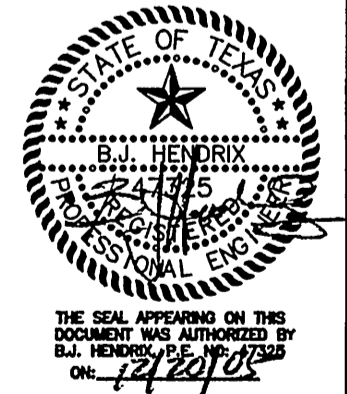


01 EQUIPMENT PLAN - POWER
 SCALE: 1/8" = 1'-0"

REVISIONS

Sheet Title:
EQUIPMENT POWER

Project:
GEORGETOWN COMMUNITY CENTER
 Georgetown, Texas



REFERENCE GENERAL NOTES ON SHEETS M1.1, P1.1 AND E1.1 FOR ADDITIONAL INFORMATION



This document, the ideas and designs incorporated herein are and shall remain the property of Hendrix Consulting Engineers. These documents are not to be used or altered, in whole or in part, for other than the original intended use, nor are they to be assigned to any third party without written permission from Hendrix Consulting Engineers.

HCE job no.: 05-069

**11
13**

ELEVEN THIRTEEN ARCHITECTS INC.
 807 S. ROCK SUITE 102
 GEORGETOWN, TEXAS 78626
 TEL 512.869.1104 FAX 512.869.1362

Date:	12/20/2005	Sheet#	E3.2
Proj. #			
Drawn by:			
Issued for:	BID		

C:\09\GEORGETOWN COMMUNITY CENTER\09\09E3.dwg, 12/19/2005 3:39:51 PM, CAD STATION, XP 38224 1050c.pcd, Acad B - 24 x 36 in., 1:36