



Gary Park Skatepark

**PUBLIC INPUT
MEETING #1**
Georgetown, TX



**June 29, 2023
6:00PM-7:30PM**

Meeting Guidelines

- During presentation use respectful etiquette
- We will respond to all the questions at the end of the presentation during Q&A
- We can allow comments at the end of the presentation one at a time when you raise your Hand

TODAY'S PRESENTATION

1. Welcome & Introductions
2. Project Overview
3. Schedule
4. Skateboarding & Skateparks Info
5. Review Precedent Design Directions
6. Group Design Session
7. Review Online Survey
8. Open Discussion & Questions





What is this project all about?

Project Introduction By City Staff



NLS Skatepark Design Team
www.newlineskateparks.com





Skateparks

101

*Sometimes it's the journey
rather than the destination*

Skatepark Benefits:

- Skateboarding is a lifelong activity
- Participants are between the age of 3-57
- All gender and all skill levels
- Largest # participants are youth (11 –19)
“Benefits of Recreation”
- There is a large population of youth trying to be active but often being pushed away.
- There are very few barriers to participation
- Social values and integration
- Places of meaning and atmosphere
- Revenue generating (tourism)
- Very affordable (Cost and space efficient per square foot)
- You don’t need to join a team
- Identity, freedom, and individualism
- Can be done almost anytime & anywhere. Local activity and global connection
- Self progressing activity
- Skateboarding is safer than many other recreational choices available to today’s youth (National Consumer Safety Commission)



Skatepark Benefits:

5.7 + million skateboarders in North America (NSGA) “Action Sports” (skateboarding, BMX biking, scooter riding and freestyle inline skating) have been one of the fastest growing areas of youth recreation over the last two decades

World Cup Skateboarding has been sanctioning professional contests and setting judging standards for nearly two decades (i.e.. X games, Dew Tour, etc.)

There are numerous international pro contests in North America:

(i.e.. Street League, Vans Park Series)

Skateboarding confirmed as a full medal sport for the 2020 Olympic Games

(following the popularity of snowboarding in the winter games)

Neighborhood Skatepark: 6,000-12,000 sqft (neighborhood parks, etc.)

Community Skatepark: 12,000-25,000 sqft (community parks, high schools, recreation centers)

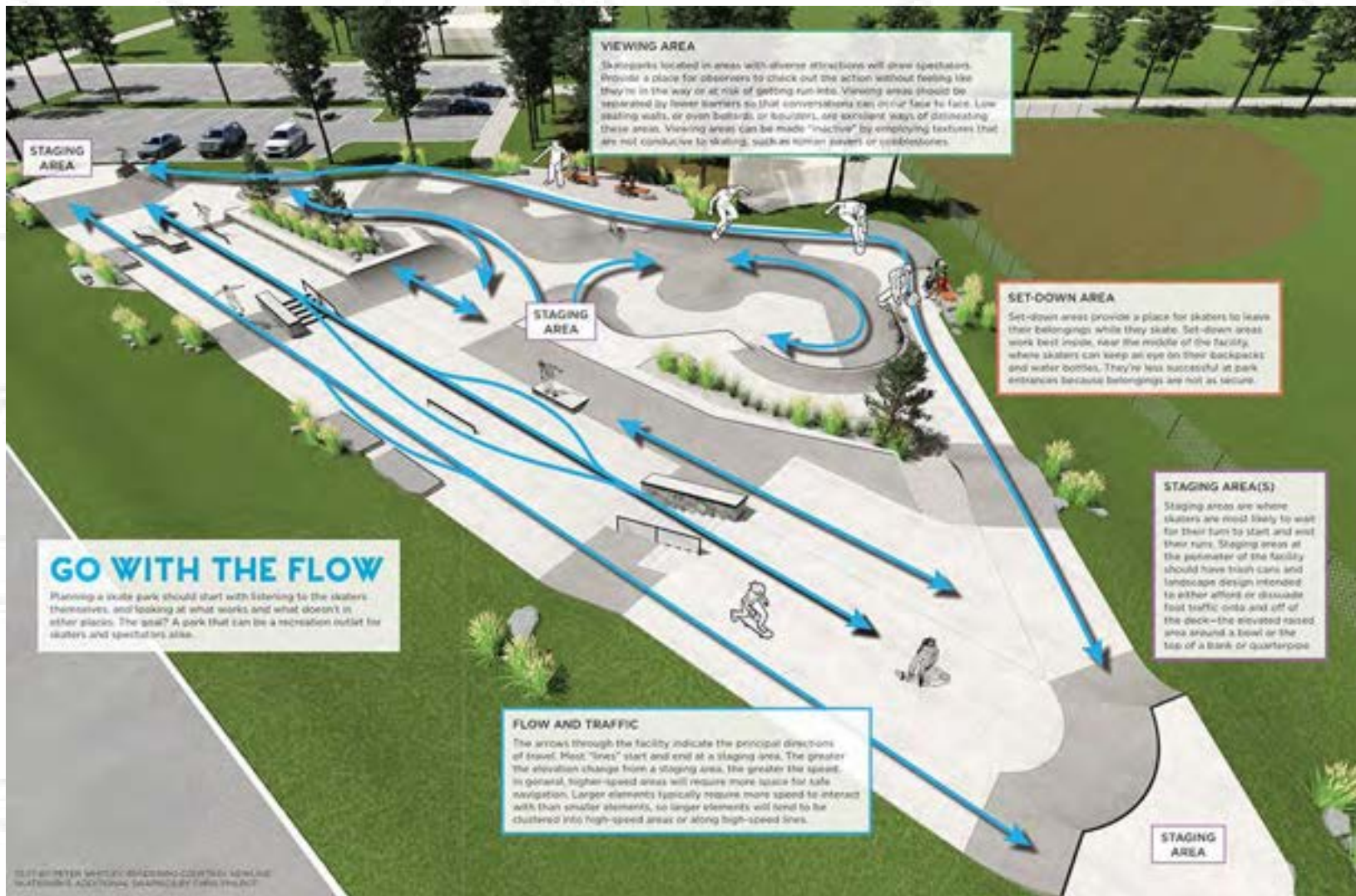
Regional Skatepark: 25,000-40,000 sqft (regional parks, arenas, etc.)





Modern Skatepark Characteristics

Project and Artistic Element Examples...



VIEWING AREA

Skateparks located in areas with diverse attractions will draw spectators. Provide a place for observers to check out the action without feeling like they're in the way or at risk of getting run into. Viewing areas should be separated by lower barriers so that conversations can occur face to face. Low seating walls, or even bollards or fountains, are excellent ways of delineating these areas. Viewing areas can be made "inactive" by employing textures that are not conducive to skating, such as rip-rap pavers or cobblestones.

STAGING AREA

STAGING AREA

SET-DOWN AREA

Set-down areas provide a place for skaters to leave their belongings while they skate. Set-down areas work best inside, near the middle of the facility, where skaters can keep an eye on their backpacks and water bottles. They're less successful at park entrances because belongings are not as secure.

GO WITH THE FLOW

Planning a skate park should start with listening to the skaters themselves, and looking at what works and what doesn't in other parks. The goal? A park that can be a recreation outlet for skaters and spectators alike.

STAGING AREA(S)

Staging areas are where skaters are most likely to wait for their turn to start and end their runs. Staging areas at the perimeter of the facility should have trash cans and landscape design intended to either afford or dissuade foot traffic onto and off of the deck—the elevated paved area around a bowl or the top of a bank or quarterpipe.

FLOW AND TRAFFIC

The arrows through the facility indicate the principal directions of travel. Most "lines" start and end at a staging area. The greater the elevation change from a staging area, the greater the speed. In general, higher-speed areas will require more space for safe navigation. Larger elements typically require more speed to interact with than smaller elements, so larger elements will tend to be clustered into high-speed areas or along high-speed lines.

STAGING AREA



























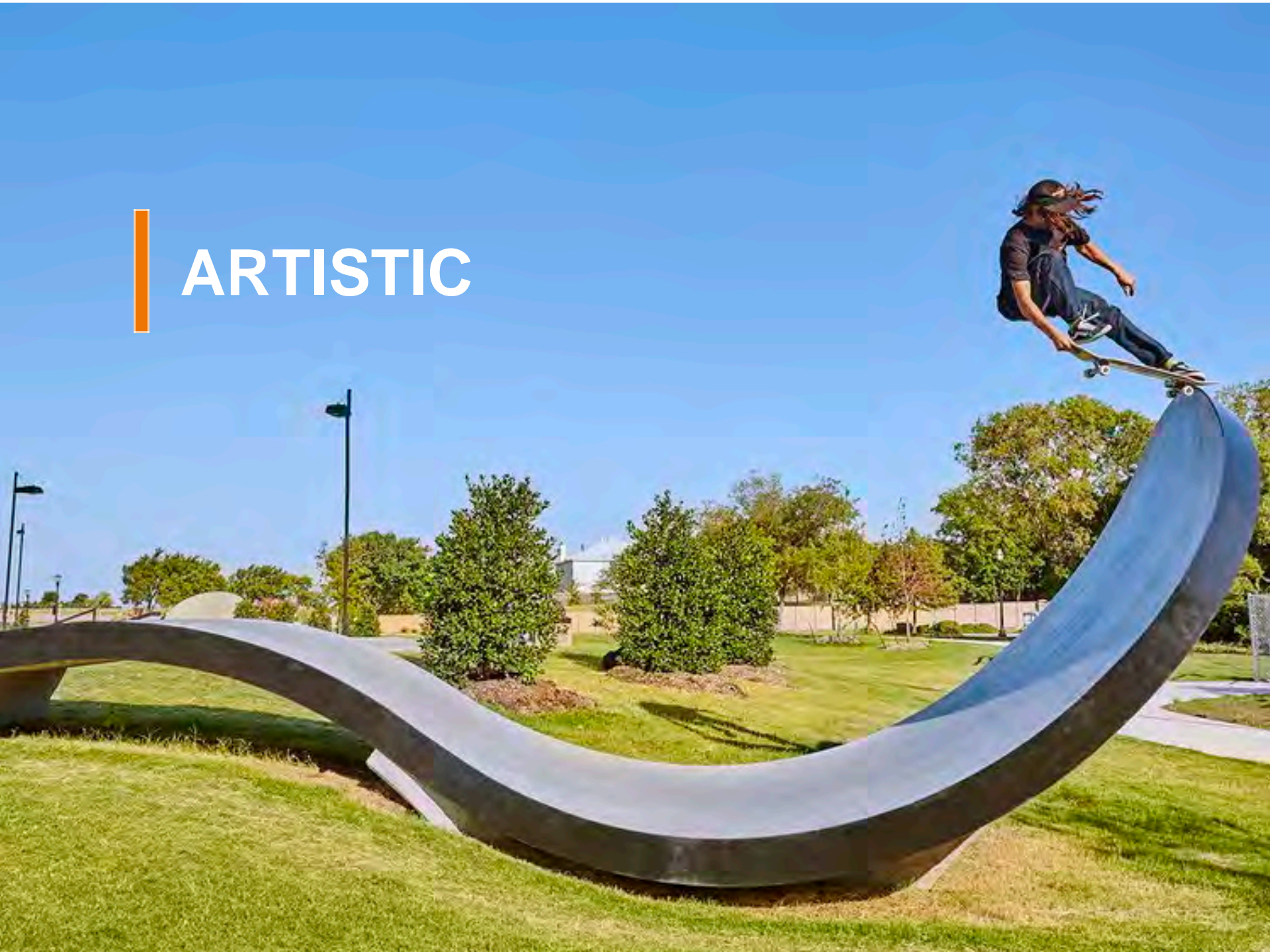








ARTISTIC



Sculptures & Art Gallery



• *The Spirit Fish*



• *The Magic Carpet*



• *Art Gallery Display Panel*



|| One must work and dare ||

|| if one really wants to live. ||

|| - Vincent van Gogh ||

Concept Designs

The following preliminary concept designs illustrate some of the stylistic approaches that we have pursued in some form for the Skatepark.

Note: Final project size and design details will be informed by further consultation with the Owner and community + confirmation of an approved civil program.

Key Considerations:

- Economic Viability (Budget, Local Pricing)
- Technical Feasibility (Limits of Utilities, Storm water)
- Environmental Capability (Existing site and soil conditions)

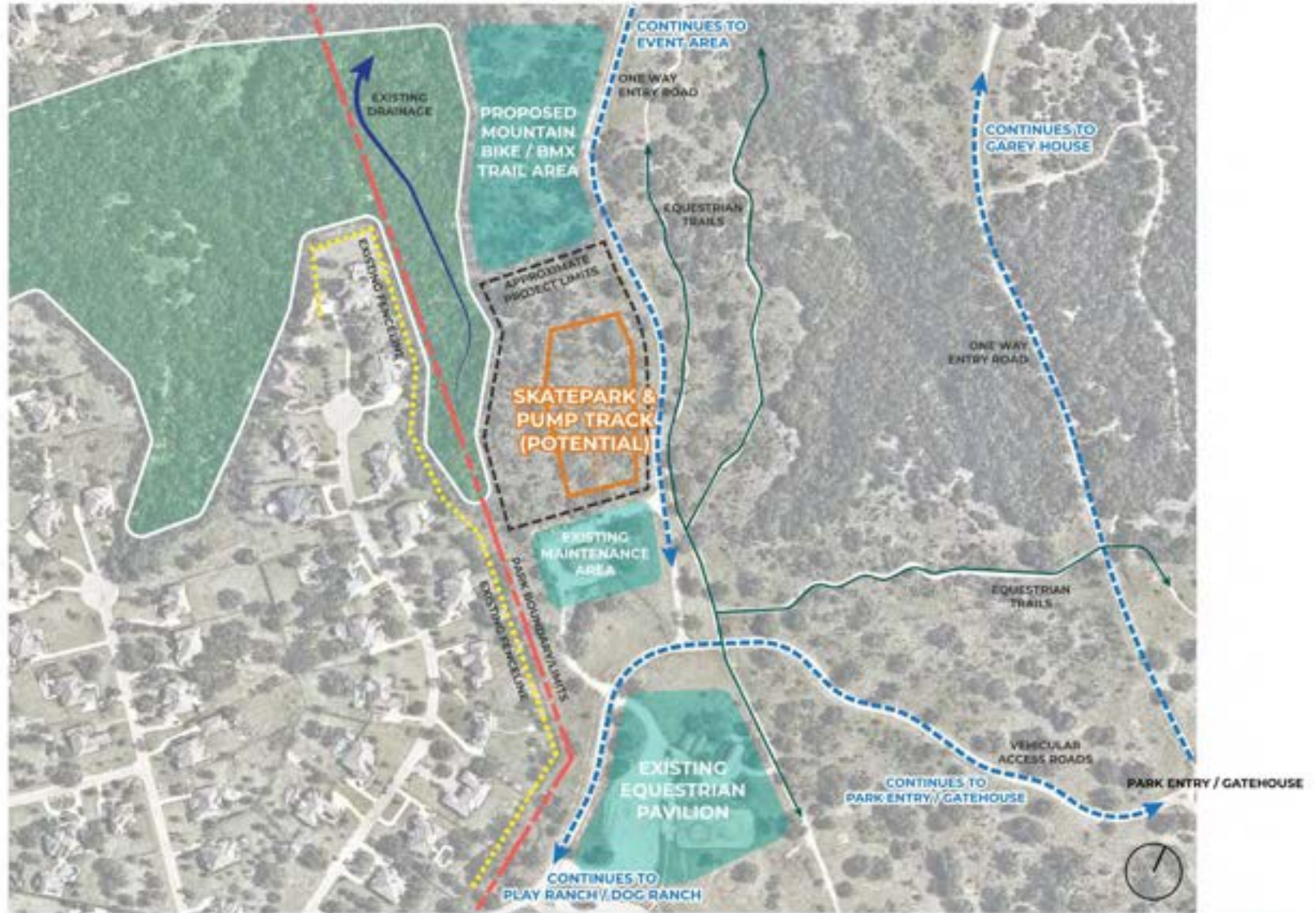
Site Analysis

PROJECT START-UP PACKAGE

Existing Park Plan



Site Analysis



Example Concepts



Example Concepts



Example Concepts

QUARTERPIPES & MINI RAMPS



BANKS



HIP/PYRAMID



SLAPPIES



FUNBOX FEATURES



TRANSITION & FLOW



Example Concepts

STAIRS AND DROPS (WITH HUBBAS AND RAILS)



RAILS



LEDGES AND BENCHES



GAPS



MANUAL PADS



CUSTOM SKATEABLE ART FEATURES

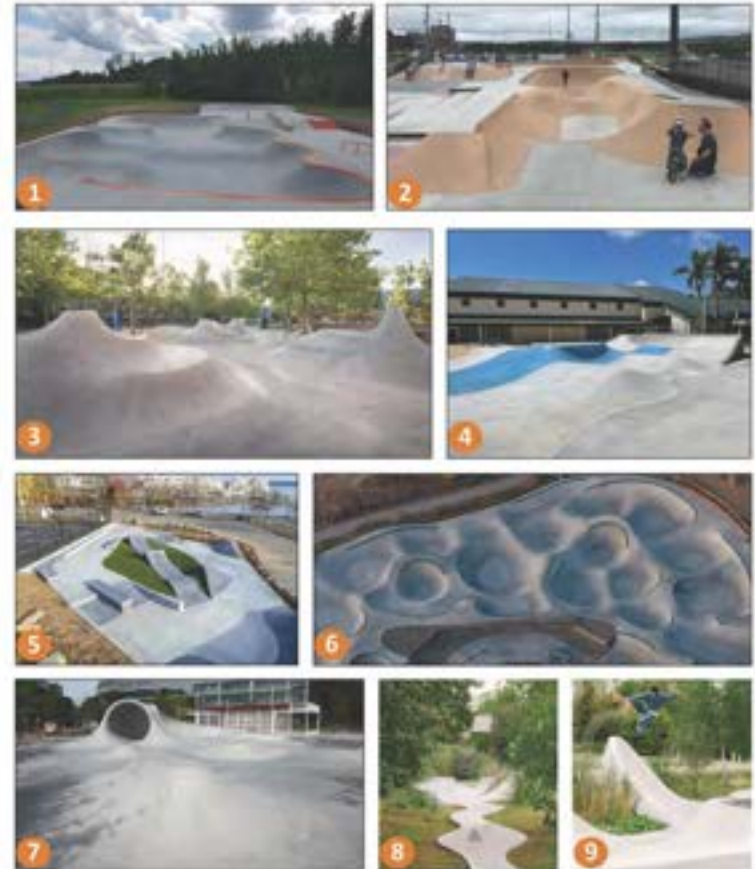


Example Concepts

PUMPTRACKS

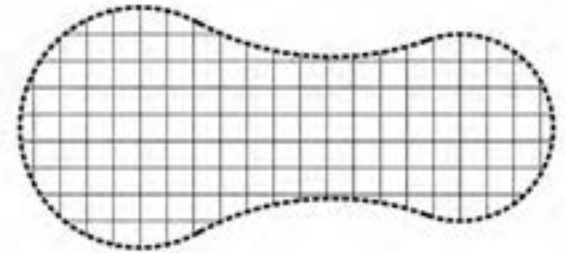
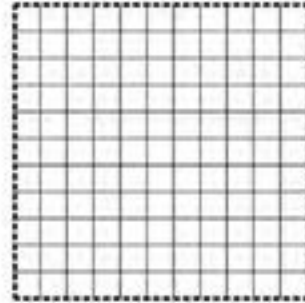
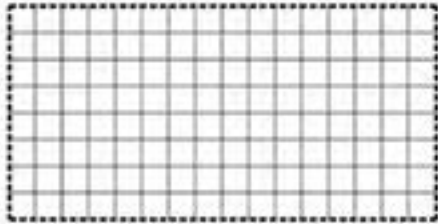


OPEN FLOW

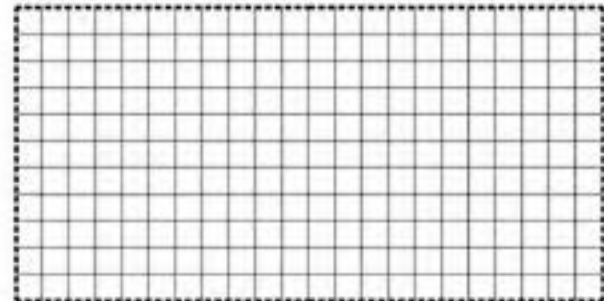
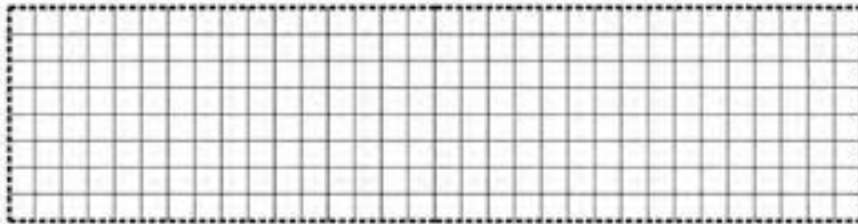


Design Exercise

APPROXIMATE
SKATEPARK FOOTPRINT 10,00
S.F. TO 12,000 S.F. OPTIONS



APPROXIMATE
SKATEPARK FOOTPRINT 20,00
S.F. TO 25,000 S.F. OPTIONS

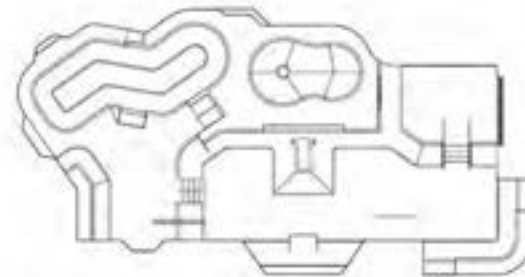
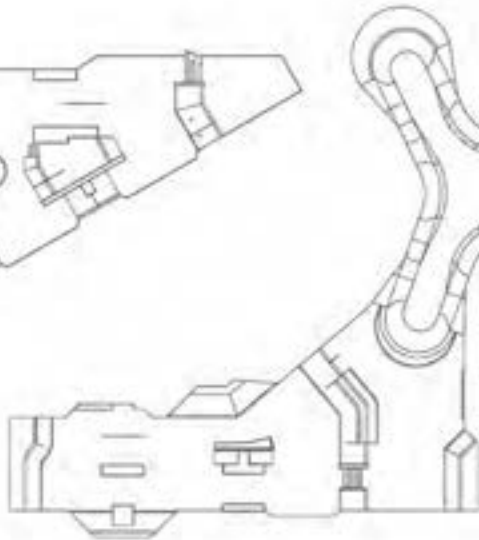
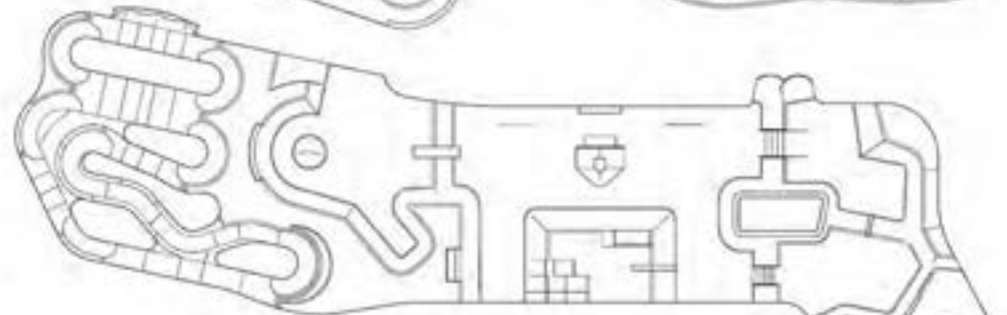
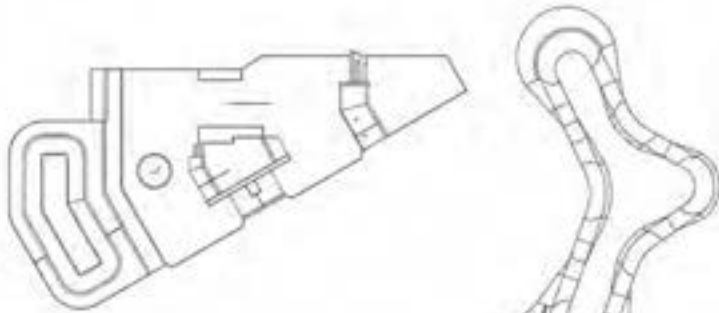
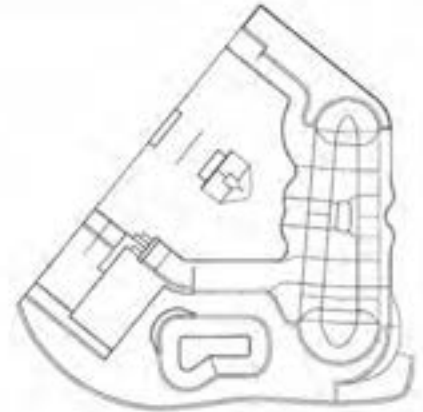
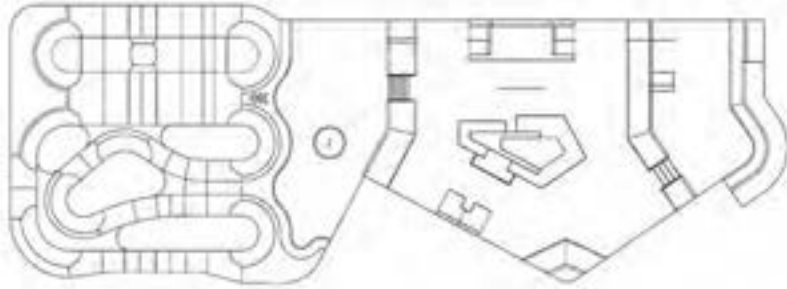


Sample Features
City of Georgetown, TX
Group # ____



Design Exercise

Example Skateparks and Pump Tracks

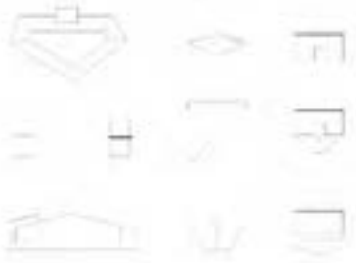


10' Grid Sketch Base and Skatepark Examples
City of Georgetown, TX
Group # _____

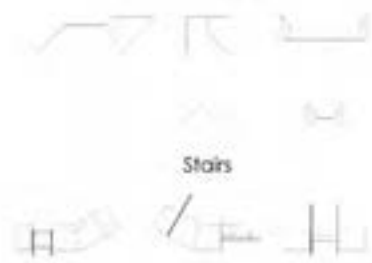


Design Exercise

Pyramids / Funboxes



Banked Features



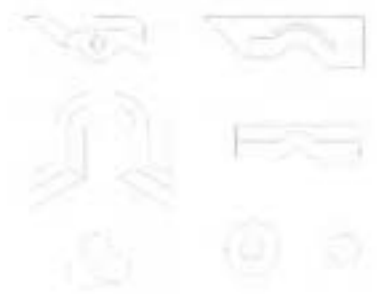
Stairs



Ledges / Sculptural Features



Transition Features



Flow Bowls / Pools



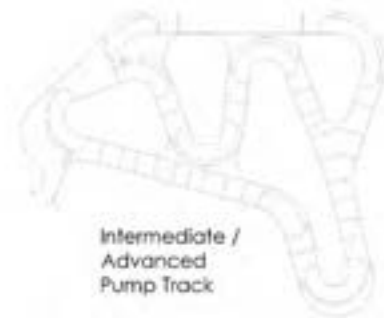
Beginners Pump Track



Beginners / Intermediate Pump Track



Intermediate / Advanced Pump Track



Design Process- Online Survey



Garey Park Skatepark: Kick-off design meeting

Please fill out this form to provide your feedback and help direct concept designs for the new Garey Park Skatepark! This survey will be available for input starting June 29th through July 13th.

teamusa.nls@gmail.com [Switch account](#)

Not shared

* Indicates required question

Preferred Skatepark Feature and Terrain Styles

Here is your opportunity to tell us the style of features you would like to see in skateparks. Typically, great parks include a variety of terrain but your feedback is critical in establishing the theme / balance of the new park.

Please Rank Your Preferred Terrain Styles *



	1st	2nd	3rd	4th
Bowl / Halfpipe	<input type="radio"/>	<input type="radio"/>	<input type="radio"/>	<input type="radio"/>
Plaza / Street	<input type="radio"/>	<input type="radio"/>	<input type="radio"/>	<input type="radio"/>
Street Course / Obstacle	<input type="radio"/>	<input type="radio"/>	<input type="radio"/>	<input type="radio"/>
Pump & Carve	<input type="radio"/>	<input type="radio"/>	<input type="radio"/>	<input type="radio"/>

Design Process- Online Survey

Additional Information

Beyond the concrete hardscape, is there anything else you would like to see included with this skatepark? (ie. seating/viewing space, landscaping, shade, water fountain etc.)



Your answer

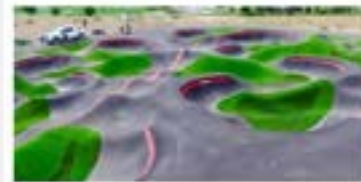
Preferred Pump Track Terrain



Simple Beginner Loop



Linear Single Track



Non Linear - Berm Heavy



Integrated into Skatepark

Open Discussion – Q & A

- During discussion use respectful etiquette.
- What elements from the concepts presented did you like?
- Discuss the theme/look of the park.
- Please share ideas for park identity.

QUESTIONS?



SURVEY

SURVEY
LINK:

June 29–July 13

<https://tinyurl.com/Garey-Meeting-1>



A grayscale photograph of a person performing a skateboard trick on a ramp. The person is in mid-air, with their skateboard tilted. The background shows a building and trees. The image is overlaid with a semi-transparent gray layer on the right side and a solid orange layer at the bottom. The text 'Thank You' is centered in white with a drop shadow.

Thank You